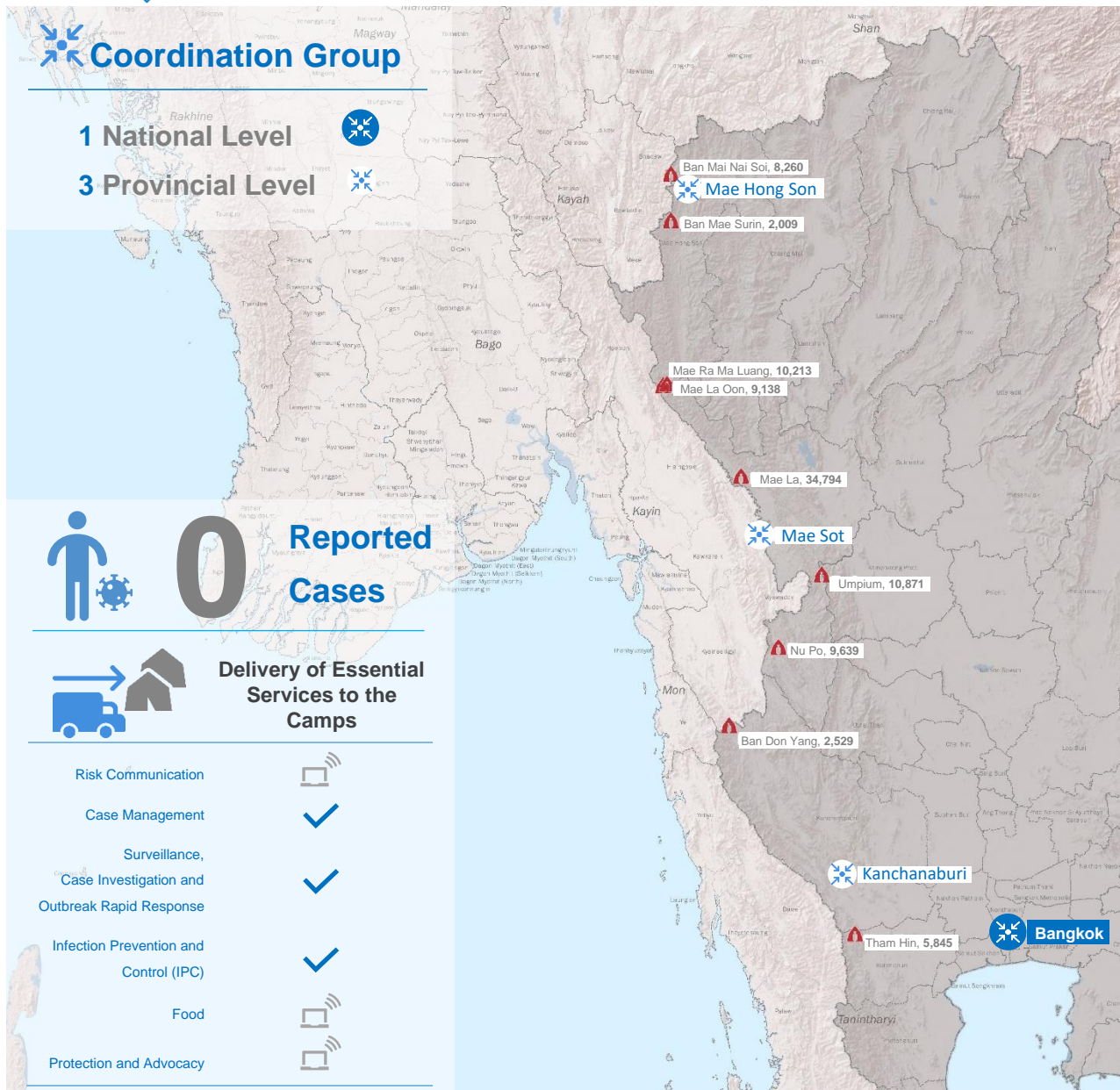


Dashboard

COVID-19 Outbreak Response Coordination Group for the 9 temporary shelters along the Thai-Myanmar border

08 May 2020



Population Statistics

* UNHCR statistics as of 30 April 2020

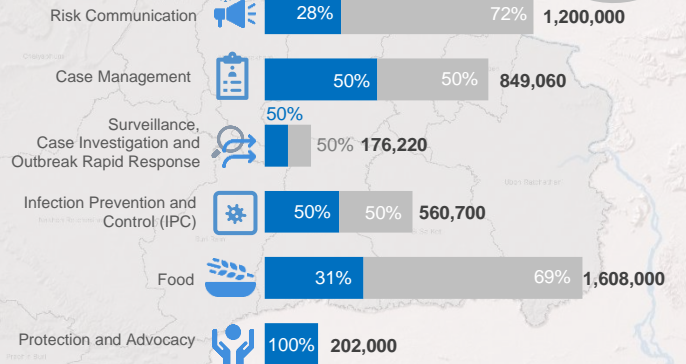
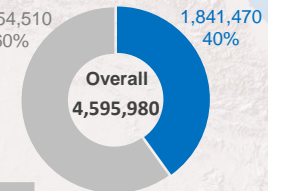
Total population 93,298 Persons

	Age				Gender	
	below 5 years	5-17 years	18-59 years	60+ years	F	M
Ban Don Yang	10%	31%	51%	7%	51%	49%
Ban Mae Surin	9%	34%	52%	5%	50%	50%
Mae La	7%	32%	54%	7%	51%	49%
Mae La Oon	12%	32%	49%	6%	50%	50%
Mae Ra Ma Luang	11%	32%	51%	6%	50%	50%
Mai Nai Soi	8%	31%	54%	8%	49%	51%
Nu Po	8%	30%	56%	5%	51%	49%
Tham Hin	9%	34%	52%	6%	52%	48%
Umpium	7%	30%	56%	7%	50%	50%

Funding Situation (USD)

*These funding requirements are for 6 months based on current assessed needs.

Contribution Received 1.84M
Gap 2.75M



Dashboard

COVID-19 Outbreak Response Coordination Group for the 9 temporary shelters along the Thai-Myanmar border

08 May 2020



Risk Communication

ADRA (ACTED, COERR, JRS, HI, SCI, FilmAid, MI, UNHCR, TBC)*

Key Issue *Timely outreach to refugees in context of social distancing*

- Ongoing sharing of COVID-19 prevention and response messages in Karen and Burmese languages with refugees, including those with specific needs, through small group dialogues, posters, leaflets, PA system announcements, videos and sharing of web links
- Risk Communication and Community Engagement Strategy (RCCE) completed after consultations with RCCE Working Group and National Coordination group
- Training provided for RCCE community engagement workers in all nine camps, including on home visit protocols from the protection working group along with session guidance
- Guidance for vulnerable families on mental health and wellbeing under development
- Over 20,000 cloth masks distributed to refugees. Procurement process for an additional 94,000 masks and 16,500 hygiene kits underway. Leaflet about hygiene kit content and guidance on using cloth masks developed
- PSEA messaging to be integrated into loudspeaker announcements
- Feedback and complaints mechanism developed and will be integrated into existing activities in camps



Case Management

IRC (MI, CDC)*

Key Issue *Currently no secured testing or referral facilities for 4 camps (~32,000 people) in Mae Hong Son Province*

- Presently locating and preparing COVID-19 isolation and treatment facilities
- Engagement with Shoklo Malaria Research Unit to finalize process to facilitate testing for Mae Hong Son camps, if required
- Initiated development of case management protocols
- Ongoing procurement of pharma and supplies
- Enacted measures to reduce overall patient load at health facilities



Surveillance, Case Investigation and Outbreak Rapid Response

IRC (MI, CDC, WHO, MOPH, MOI)*

Key Issue *Different approaches to entry screening and quarantine measures applied across camps; potential under-reporting*

- Displaced Persons in Thailand Guidelines for Prevention, Surveillance, Investigation, and Mitigation of COVID-19 under review by MOPH
- Position Paper on Quarantine Practices in the 9 Temporary Shelters developed, together with Food and Protection pillars
- All surveillance staff trained and applying current MoPH case definition
- Triage conducted at all camp hospitals to cohort and screen patients with symptoms
- Community surveillance systems operating, and community quarantine areas established in all nine camps
- Ongoing support to Thai officials conducting screening at entry/exit gates
- Contact tracing training for community health workers completed in some camps and ongoing in others
- Transit isolation rooms identified and ready for patients awaiting referral, and expansion of number of beds available in camps for suspect and confirmed cases



Infection Prevention and Control (IPC)

IRC (MI, CDC)*

Key Issue *Unpredictable supply of personal protective equipment (PPE)*

- Six-week stock of PPE equipment in place and monthly supply of surgical masks provided by MoPH for all nine camps
- COVID-19 SOPs under ongoing development and ongoing training all health care staff in nine camps
- COVID-19 SOPs for isolation and treatment under development and training initiated
- Decontamination SOPs under development and training initiated in certain camps
- IPC detailed refresher training delivered to local authorities and camp security
- Soap and water supplies provided to support continuous operation of handwashing at camp entry/exit points
- Handwashing stations in place in public areas, prioritized for most frequently visited areas
- Hand hygiene at household level supported by community engagement team



Food

TBC

Key Issue *Increasing vulnerability and dependency on assistance in the long term*

- COVID-19 transmission mitigation guidance issued to food vendors, suppliers and warehouses
- Food vendors provided with soap, alcohol and bleach to sanitize shops
- Handwashing stations installed at shops and warehouses
- SOPs for quarantine/isolation conditions developed, in coordination with nutrition teams, health actors and camp committees
- Strategy developed to ensure refugees' continued access to basic food items and cooking fuel
- All households to receive Most Vulnerable food rations for a minimum three months (April to June) to help alleviate loss of informal income opportunities.



Protection and Advocacy

UNHCR (CCSDPT agencies, KWO, KnWO, KRC, KnRC)*

Key Issue *Inclusion of refugees in national surveillance, response, and planning and protection mainstreaming*

- Continued advocacy on inclusion of refugees in the RTG's national surveillance, response and planning activities for COVID-19
- Supporting mainstreaming of protection in the work of other pillars, including mitigation of SGBV and PSEA risks
- Ensuring continued delivery of protection services for the most vulnerable, including through review of vulnerability data
- Ensuring continued regular and effective protection monitoring, including access to reporting channels for SGBV survivors and other serious protection cases. Update of SGBV referral pathways completed in all camps, as well as provision of some material support
- Delivering technical support for remote case management to camp-based staff and CBOs to ensure continuity of protection services
- Development and distribution of child-friendly material on COVID-19.
- Strategy to support safe anticipated reopening of schools in camps under development

*Represents lead and collaborating agencies for COVID response