

---

# CCSDPT DIRECTORY FOR 2011

---



COMMITTEE FOR CO-ORDINATION OF SERVICES TO DISPLACED PERSONS IN THAILAND

## INTRODUCTION

The Committee for Coordination of Services to Displaced Persons in Thailand (CCSDPT) was formed in 1975 as a network for non-governmental organizations (NGOs) to meet on a regular basis to exchange information and to discuss their work. At its peak in 1981, CCSDPT membership included 52 agencies serving refugees from Laos, Vietnam and Cambodia. Current membership is 17 and activities are currently focused on refugees from Burma.

Every Member of CCSDPT nominates its representative to the Directors Forum. The Forum elects a Chairperson and a Vice-Chairperson for a two year term. The Directors convene 6 times a year in Bangkok.

The CCSDPT Secretariat, the Executive Coordinator and the Administrative Officer, support the coordination of Member agencies efforts and assist in representing the membership's interests to the Royal Thai Government, international organizations and embassies.

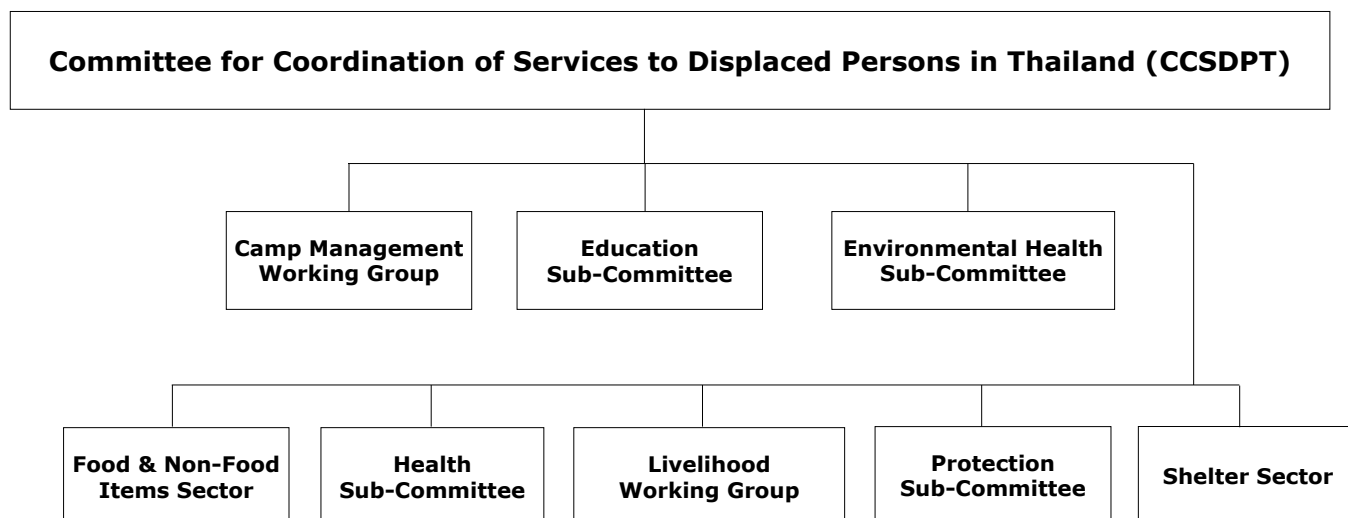
CCSDPT **Open** meetings are held on a bi-monthly basis and are attended by organisations involved or interested in the work of CCSDPT including Member and non-Member NGOs, International Organizations, Embassies etc. The CCSDPT Open Meeting serves as a forum to share information on the current refugee situation.

CCSDPT is funded by subscriptions from Members and contributions from international organizations and embassies.

CCSDPT Secretariat Office  
1028/5 Pong-Amorn Building, 2nd Floor,  
Rama IV Road, Thungmahamek  
Sathorn, Bangkok 10120  
Tel: 02.679.9270  
Fax: 02.679.8603  
Email: [ccsdpt@ccsdpt.org](mailto:ccsdpt@ccsdpt.org)  
website: [www.ccsdpt.org](http://www.ccsdpt.org)

May 2011

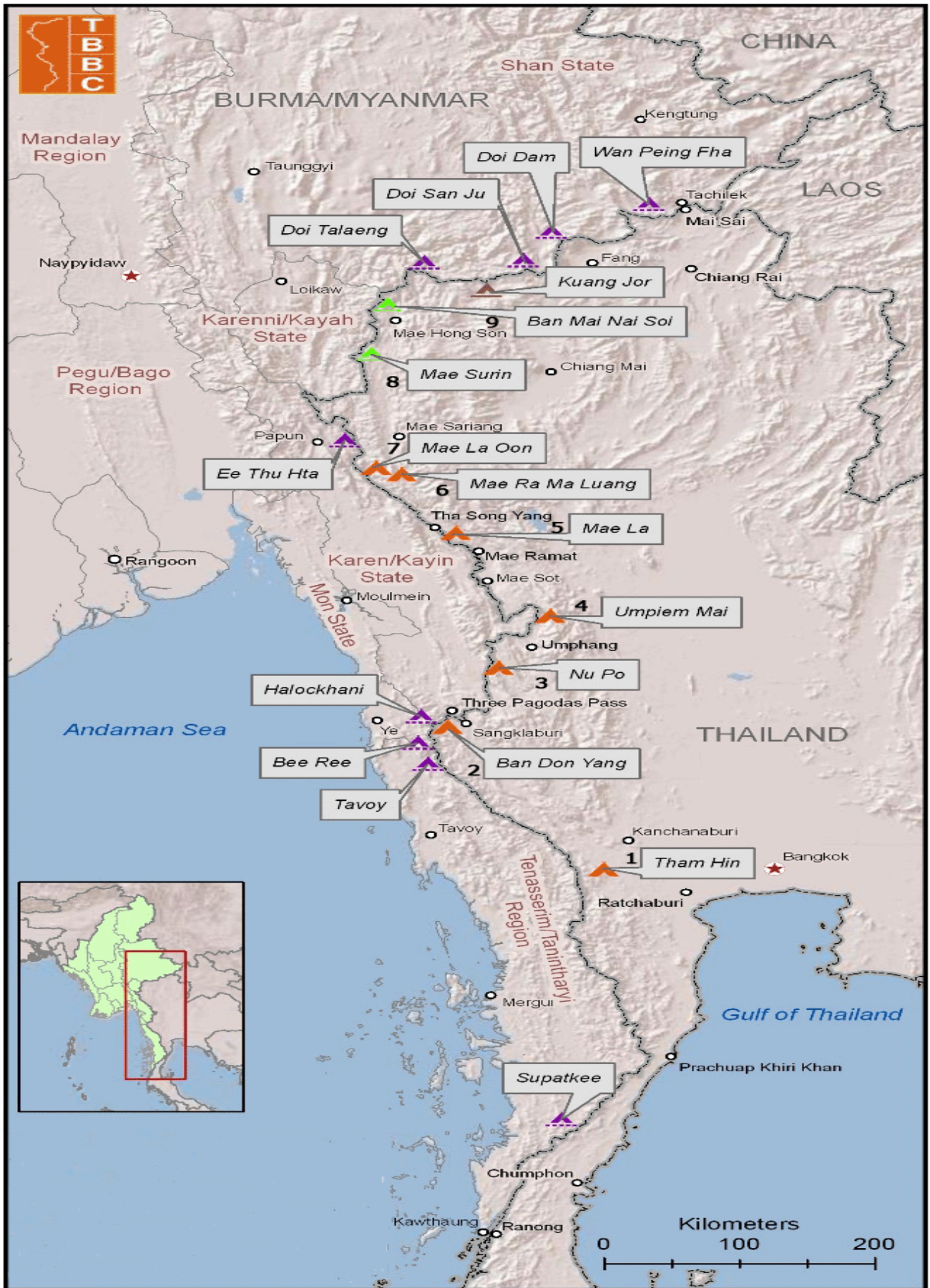
## CCSDPT COORDINATION STRUCTURE



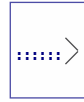
## CCSDPT MEMBERS

<b>ADRA</b>	Adventist Development and Relief Agency
<b>AMI</b>	Aide Medicale Internationale
<b>ARC</b>	American Refugee Committee
<b>COERR</b>	Catholic Office for Emergency Relief and Refugees
<b>HI</b>	Handicap International
<b>IRC</b>	International Rescue Committee
<b>JRS</b>	Jesuit Refugee Service
<b>MI</b>	Malteser International
<b>RF-DARE</b>	Ruammit Foundation for Youth and Children - Drug & Alcohol Recovery & Education
<b>RTP</b>	Right To Play
<b>SOL</b>	Solidarites
<b>SVA</b>	Shanti Volunteer Association
<b>TBBC</b>	Thailand Burma Border Consortium
<b>TOPS</b>	Taipei Overseas Peace Service
<b>WEAVE</b>	Women's Education for Advancement and Empowerment
<b>WE/C</b>	World Education / Consortium
<b>ZOA</b>	ZOA Refugee Care, Netherlands

**CAMPS - APRIL 2011**



# CCSDPT MEMBERS





**Adventist Development & Relief Agency - Thailand**

Unit 1A-2A, Aleena Gardens, World Club Land, Soi 4, Moo 7, Chiang Mai-Hang Dong Road  
Tambon Nong Kwai, Amphur Hang Dong, Chiang Mai 50230, THAILAND  
Telephone: 053 839 402, Fax: 053 839 403. Website : [www.adrathailand.org](http://www.adrathailand.org)

**Started Working with Displaced Burmese** : 1984

**Sector(s) of Work (for refugees)** : Education and Vocational Training

**Work Locations (for refugee work)** : Tham Hin, Don Yang, Nupo, Umpiem Mai, Mae La, Mae Ra Ma Luang, Mae La Oon camps

**Staff (for refugee work)**: 6 International, 24 National, 179 Refugee / Displaced persons

**Funding Sources (for refugee work)** : European Commission, AusAID, UNHCR, ADRA Australia, ADRA Czech, ADRA Germany and private donors

**Mission Statement**: ADRA works with people in poverty and distress to create positive change and justice through empowering relationships and responsible action

**Goal (for refugee work)**: To empower preparation for a new future through education and vocational skills training

**Aim (for refugee work)**: To support preparation for the future for refugees and displaced persons through the provision of relevant and high quality education and vocational training services – Implemented through appropriately trained refugees and displaced persons (helping people to help themselves)

**Activities (for refugee work)**: Support for refugee school and vocational training establishment, on-going operation, and capacity building of refugee / displaced person teaching and support staff.



<b>Month/ Year Started Working with Displaced Burmese:</b>	1995
<b>Sector(s) of Work:</b>	Health – Training
<b>Work Locations with Displaced Burmese:</b>	Nu Poe, Umpiem, Maela camps.

Aide Medicale Internationale (AMI) is a nonprofit, non-governmental humanitarian organization, created in 1979. AMI is active in 8 countries all over the world. In Asia, AMI is running projects in Afghanistan, Myanmar, Indonesia and Thailand. Since 15 years, AMI is supporting the Burmese refugee population along the Thai-Myanmar border.

AMI mandate is to defend basic human rights as defined in the 1948 Universal Declaration of Human Rights. In line with its history, AMI is primarily committed to protecting the universal and inalienable right to health care. The right to health care implies the fight against physical diseases as well as psychological traumas, but also the providing of sanitary education and medical training to local populations who wish it – all this in geographical areas where health systems are disorganized, inefficient or non-existent. AMI believes in helping populations to set up and participate in their own self-reliable health care system.

**In Umpiem, Nupoe and Maela, AMI aims at providing quality health care services to the camp population:**

- AMI provides curative health cares in Umpiem and Nupoe through 1 In Patient Department (IPD) in each camp, 2 Out Patient Departments (OPD) in Umpiem Mai and 1 in Nupoe.
- AMI provides curative and preventive health cares in Maela through 1 IPD, 2 OPDs and preventive activities facilities.
- AMI performs epidemiological surveillance and outbreak response in the 3 camps, in collaboration with its partners.
- In Umpiem, Nupoe and Maela camps, AMI also provides specific health cares such as emergency referrals to Thai hospitals, dental, ophthalmology, chronic diseases, mental health, Voluntary Counseling and Testing, HIV/AIDS, Avian Influenza surveillance, preventive health campaigns (in Maela).
- Initial and refresher medical trainings are organized in the 3 camps in order to improve the medical capacities of the health workers.
- The Health Messenger Magazine: this quarterly medical publication is a bilingual (Burmese-English) distance-learning magazine aiming at refreshing and upgrading the knowledge of health and social workers practicing in the refugee camps along the Thai-Myanmar border and in migrant communities in Thailand. 3,000 copies of each issue are distributed inside the camps and Burmese migrant communities in Thailand.

In January 2010, AMI donors for 2010 are ECHO, EuropAid, UNHCR, IRC and Air Liquide.



## ARC International

**ARC International** began working on the Thai-Burma in 1992. Main areas of operation are Umpiem Mai and Nu Po camps in Tak province, and Don Yang camp in Kanchanaburi province. ARC also works in Mae Ra Ma Luang, Mae La Oon, and impacted Thai villages.

ARC's mission is to work with partners and constituencies to provide opportunities and expertise to refugees, displaced people and host communities, helping people survive conflict and crisis and rebuild lives of dignity, health, security and self-sufficiency. ARC is committed to delivery of programs that ensure measurable quality and lasting impact for the people we serve.

ARC's overall objective in camps is to improve health status of Karen and Burmese refugees.

ARC conducts the following activities in both training and services and works with communities:

### **Maternal Health**

Access to and utilization of comprehensive maternal health services, including antenatal services, attended delivery, and post-natal care; ensuring women of reproductive age access to comprehensive reproductive health and family planning services, prevention of mother to child transmission of HIV/AIDS and voluntary counseling and testing.

### **Child Health**

Child health clinics (screening, examination, immunization, and supplementary feeding) for children aged 0-4. Child immunization coverage for EPI and measles and measles coverage for women of reproductive age

### **Community Health**

Community health knowledge and training concerning endemic health problems and prevention of disease and health promotion, organization of health outreach and community participatory activities, infectious disease outbreak response and control.

### **Water and Sanitation**

Provision of adequate quantity and quality of potable water; sanitation, environmental waste disposal systems, wastewater disposal, drainage systems and disease vector control.

### **Clinical Services**

Essential clinical care services, tuberculosis prophylaxis/treatment/prevention, malaria, HIV, AI prevention and control and epidemiological health information systems.

### **Laboratory Services**

Laboratory services, including malaria smears, TB smears ova and parasites, and hematocrit/hemoglobin test services.

### **Gender Based Violence Prevention and Response**

Training, awareness-raising and implementation for communities on gender based prevention, response, counseling and referral and legal assistance.

### **Micro-Enterprise Development**

Assessment of micro-enterprise initiatives and markets; community based, market appropriate business development and trainings and micro-enterprise initiatives.

**INTERNATIONAL HEADQUARTERS** : 430 Oak Grove Street, Suite 204, Minneapolis, Minnesota 55403 USA

Tel : (612) 872-7060 Fax : (612) 607-6499 E-mail : [archq@archq.org](mailto:archq@archq.org); [www.archq.org](http://www.archq.org)



**สำนักงานคาทอลิกสงเคราะห์ผู้ประสบภัยและผู้ลี้ภัย (โคเออร์)**  
**Catholic Office for Emergency Relief and Refugees (COERR)**

112/11 สภาพระสังฆราชคาทอลิกแห่งประเทศไทย ชั้น 6 ซอยนาคสุวรรณ ถนนช่องนนทรี แขวงช่องนนทรี เขตยานนาวา กรุงเทพฯ 10120  
122/11 Catholic Bishops' Conference of Thailand, 6<sup>th</sup> Floor, Soi Naksuwan, Nonsi Road, Chong Nonsi, Yannawa, Bangkok 10120  
โทร (Tel.) +66 (0) 2681-3900 Ext. 1601-1618 โทรสาร (Fax) +66(0) 2681 3300  
Email: [coerrbangkok@coerr.org](mailto:coerrbangkok@coerr.org) Website: <http://www.coerr.org/>

**Thai-Burma Border Humanitarian Assistance Programme**

**COMMITMENT**

To alleviate the suffering of People-In-Need along the Thai-Burmese border

**AIM**

To proactively render appropriate humanitarian assistance services, particularly to Extremely Vulnerable Individuals (EVI's), that will enable them to live their lives with dignity and encourage them to be productive and caring members of their communities.

**SERVICE CAPABILITIES**

- 32 years of Humanitarian service to Refugees and affected Host Communities.
- COERR is the only Thai NGO with full coverage of all 9 refugee camps along the Thai-Burmese border.
- 4 Field Offices (Mae Hong Son, Mae Sariang, Mae Sot, Kanchanaburi) & 2 sub-offices (Umpang, Sangklaburi).
- 66 Program Staff personnel
- 362 Camp Staff (camp-based refugees i.e.- Community Social Workers, Agriculture Trainers, Waste Management and Environmental Protection Workers, Healing of Memory group leaders.

**Sectors of work:**

COERR operates a multi-component humanitarian assistance Programme:

1. Protection of EVI's
  - Community Services;
  - Relief Supplies;
  - Self-Help Activities/Vocational Training;
  - Education & sport equipment supplies ;
  - Monitoring of Separated Children;
  - Psychosocial Training & Child Protection;
  - Preservation of Traditional Arts through the Elderly
2. Sustainable Agriculture & Environmental Protection
  - Organic Agriculture Training & Production;
  - Community-based Waste Management (Mae La camp);
  - Tree Planting;
  - Road Repairs & Maintenance (Umpiem and Mae La, Mae La Oon, Mae La Ma Luang, Ban Mae Surin and Ban Don Yang)
3. Promoting Peace and Reconciliation
  - Healing of Memory groups

**Funding Sources:**

- Caritas Denmark                      - UNHCR
- Caritas Germany                        - UNICEF
- Caritas Espanola                        - MISSIO
- PRM/ IRC

Jan 2011



**Name of Organisation:** Handicap International

**Month/ Year Started Working with Displaced Burmese:** 1984

**Sector(s) of Work:** Disability and social inclusion - Mainstreaming and physical rehabilitation services for persons with disabilities in refugee camps and villages along the Thai-Burma border

**Work Locations with Displaced Burmese:**

The target population lives in six refugee camps and surrounding villages.

The 6 camps are located in the three following provinces:

Mae Hong Song:

- K1 - Mae La Oon
- K2 – Mae Ra Ma Luang

Tak:

- K3 – Mae La
- K4 - Umpiem Mai
- K5 – Nu Po

Kanchanaburi:

- K6 – Ban Don Yang

**ALL following Items Optional:**

Funding Sources: United Nations High Commissioner for Refugees (UNHCR), Bureau of Population, Migration and Refugees (US state department) and Handicap International's own funds.

**Brief Programme Description**

1. Objectives

- Promoting Equal Access to Assistance and Protection for Persons with Disabilities (PwDs) in Thai Border Camps
- Provision of Physical rehabilitation services including disability prevention activities (physiotherapy and Prosthetics) for the persons with physical impairments.
- Prioritize the capacity building and increased participation of the disabled refugees in the decision processes and community activities.
- Systematize the mainstreaming approach for services and policies concerning the refugees in the camps
- Promoting SHGs and mainstreaming disability through rights and inclusive approaches.

2. Key Activities

- **Physical rehabilitation services for People With Physical Disabilities** ( include the provision of prostheses, assistive devices and physiotherapy treatments, disability prevention awareness trainings)
- **Livelihood and social inclusion for People With Physical Disabilities** (mainstreaming disabilities into mainstream camp services, advocacy, lobbying, awareness and trainings of the stakeholders on disability rights and issues, disability information resource centres, accessibility, and development of local competencies- self help groups and networks).



2<sup>nd</sup> Floor, Pong-Amorn Building, 1028/5 Rama IV Road, Thungmahamek, Sathorn, Bangkok 10120  
 Telephone: 02 679 9270 Fax : 02 679 8603 Email : [hr@ircthailand.org](mailto:hr@ircthailand.org)

## International Rescue Committee

**Start Date in Thailand:** 1976

**With Displaced Burmese:** 1990

**Work Sectors:** Health, Legal Assistance & Promotion of Rule of Law, US Resettlement Processing, Water, Sanitation, CBO Capacity Building, Gender-Based Violence, Research, Advocacy, and Child Protection. Funding to CBOs and to international NGOs for Health, Education, Emergency Response, Relief Distribution, Research, Sanitation and Child Protection.

**Work Locations:** Mae Hong Son: Sites 1, 2, 3, 4, 7 districts and the Provincial Office of Public Health. Ratchaburi: Tham Hin camp. Tak: Mae La, Umpiem Mai and Nu Po camps, 5 districts and the Provincial Office of Public Health. Kanchanaburi: Ban Don Yang camp and 4 districts. Chiang Rai: 4 districts and the Provincial Office of Public Health. Chiang Mai: 9 districts and the Provincial Office of Public Health. Bangkok metropolitan area.

**Number of Staff:** International 42, National 330, Camp-based 800, MOPH community health workers/volunteers 200

**Funding Sources:** U.S. Agency for International Development, U.S. State Department Bureau of Population, Refugees & Migration, European Commission Humanitarian Aid, Stichting Vluchteling, United Nations High Commissioner for Refugees, U.K. Department for International Development and various foundations and corporate donors..

**Mission Statement:** The International Rescue Committee responds to the world's worst humanitarian crises and helps people to survive and rebuild their lives. Founded in 1933 at the request of Albert Einstein, the IRC offers lifesaving care and life-changing assistance to refugees forced to flee from war or disaster. At work today in over 40 countries and in 22 U.S. cities, the IRC restores safety, dignity and hope to millions who are uprooted and struggling to endure. In Thailand, IRC's mission is to assist conflict affected populations in Thailand to transition to sustainable development by providing aid and strengthening partners' and local institutions' capacities to provide health, protection and education services.

**Activities:** IRC assists target communities in the following ways:

- Provides refugees with primary, community and reproductive health care, health care training and water & sanitation services in Ban Mai Nai Soi, Ban Mae Surin and Tham Hin refugee camps;
- Legal assistance services and trainings for refugees in Ban Mai Nai Soi, Ban Mae Surin and Mae La camps in cooperation with the Ministry of Interior, Ministry of Justice and UNHCR. The program plans to expand to Nu Po and Umpiem Mai camps;
- Programs to prevent and respond to gender-based violence in Ban Mai Nai Soi and Ban Mae Surin refugee camps in Mae Hong Son province, Tham Hin refugee camp and Mae La camp;
- Eye screening training, the provision of eyeglasses and eye surgeries in nine refugee camps, migrant schools and Mae Tao Clinic;
- Research and advocacy regarding the needs, protection and basic human rights of all displaced people from Burma in Thailand;
- Partnerships with Provincial Offices of Public Health to support health outreach activities for Burmese migrants in four Thai provinces;
- Strengthening community and institutional child protection mechanisms in Tak province with a focus on displaced Burmese communities in collaboration with NGO and CBO partners, and Thai Government stakeholders;
- Funding, capacity building and technical support for 21 Burmese Community-Based Organizations, National and International NGOs and the Ministry of Public Health to provide health, education, food and other relief services to Burmese refugees in nine camps in Thailand and Burmese displaced in five Thai provinces;
- Funding for food and cooking fuel distribution in nine camps to the Thailand Burmese Border Consortium;
- Funding for Mae Tao Clinic for health services for over 100,000 people from Burma living near the Thailand-Burma border;
- Funding for education activities to World Education in seven refugee camps and five provinces in Thailand, and cooperation with the Ministry of Education support education services for people from Burma in Thailand;
- Funding for migrant health technical assistance, advocacy and health outreach in Bangkok to PATH;
- Assist persons seeking admission the United States as refugees by preparing and completing refugee applications, and to assist the US Government in the processing of applications (Southeast Asia Overseas Processing Entity, OPE).

IRC partners with local community-based organizations, national/international NGOs and coordinates with the Royal Thai Government Ministry's of Interior, Public Health, Education and Justice, and Social Development and Human Security; the National Human Rights Commission; the United Nations, in particular UNHCR, UNICEF, UNOCHA, WHO, IOM and ILO; and, with the Coordinating Committee for Services to Displaced Persons in Thailand (CCSDPT).



#### **Year started working with refugees in Thailand: 1980**

#### **Sectors of work:**

Jesuit Refugee Service (JRS) works in education, counseling, legal aid, emergency and medical services. The people served include asylum seekers and refugees, internally displaced, in detention centres, vulnerable migrants. Advocacy forms an integral part of all programs.

#### **Work locations with Displaced Burmese:**

JRS Thailand has offices in Bangkok and Mae Hong Son, Ranong, Mae Sot, and Wieng Heng.

#### **BRIEF PROGRAM DESCRIPTION:**

**Mission:** To accompany, serve and defend the rights of refugees and forcibly displaced people

#### **Refugee Education Program (KnED) Mae Hong Son:**

#### **Goal:**

To ensure the delivery of quality inclusive education and training for refugees in Ban Mai Surin and Ban Mai Nai Soi, and enhance the refugees' skills and livelihood opportunities.

#### **Objective:**

1. To assist in the provision of basic education.
2. To improve the skills of teachers and education staff to increase quality of education
3. To maintain the capacity of KnED for effective management of the camp education system
4. To ensure inclusive education
5. To ensure the protection and well-being of refugees, especially school-aged children and youth
6. To promote vocational and literacy skills for self reliance, particularly among vulnerable population.

#### **Activities:**

JRS began working along the Thai-Burma border in 1993 and has been the primary support for education in the Karenni camps since 1997. In 2010, JRS continues to support KnED in providing the following educational programmes: Primary Education (Kindergarten – 4th standard); Secondary School Education (5th – 10th standard); Special Education (inclusive and out-of-school); Home-School Liaison; Curriculum Development; Vocational Training and Non-Formal Education and Teacher Training. Management and capacity development of staff is a major focus in all sectors and is strengthened through training and the partnership working relationships. In addition, JRS provides all stipends, educational supplies and school building materials for the above mentioned educational programmes.

#### **Urban Refugee Program Bangkok:**

#### **Goal:**

Ensure that the basic survival and protection needs of urban asylum seekers and other persons of concern during the UNHCR refugee status determination process and determination of their needs for survival support after being granted refugee status, are met.

#### **Objective:**

1. Provide limited financial, material and other basic survival needs to asylum seekers during the UNHCR RSD process based on demonstrated need.
2. Ensure that asylum seekers have access to counselling, psychosocial support and adequate referral services.
3. Organize and support asylum seeker community groups in responding to their collective needs and strengthen their capacity to manage their psychosocial and safety concerns and self-help livelihood activities.
4. Provide legal support and representation to asylum seekers, and advocate for the rights and entitlements of asylum seekers and refugees.

#### **Activities:**

The Urban Refugee Program aims to assist asylum seekers by facilitating the Refugee Status Determination (RSD) process, and provides support during this procedure. The program provides casework, community support, counselling, legal support, financial and material assistance to urban asylum seekers and other person of concern awaiting status determination.

#### **IDC Suan Phlu Bangkok:**

#### **Goal:**

To ensure the overall well-being of the detainees, and facilitate travel for those who wish to return to their home countries.

#### **Objective:**

1. Provide quality medical care and nutrition to detainees
2. Ensure the basic welfare of detainees
3. Assist and arrange release for detainees

#### **Activities:**

The JRS clinic in IDC Bangkok provides medical care and supplementary meals for detainees. JRS also looks after detainees'

welfare by providing haircuts and family sessions for family members living in a separate cell to meet once a month. In addition, JRS organized important religious and cultural events for detainees including Christmas and Chinese New Year. Through the release programme, JRS helps detainees to be released by contacting families and friends, approaching embassies/consulates for assistance, and making travel arrangements with airlines. Long-staying detainees (i.e. over six months) and vulnerable detainees including sick and elderly, are considered for financial assistance in securing their plane tickets home. Detained asylum seekers receive legal assistance and counselling if request.

**Outreach to the Shan, Chiang Mai:****Goal:**

To ensure that vulnerable members of the Shan and Lahu refugee community have shelter and protection, and to enable refugees to access necessary education, training and livelihood opportunities in order to be self-sufficient.

**Objective:**

1. Provide educational opportunities for vulnerable refugee children in border areas of Chiang Mai province
2. Provide basic needs, including access to health care and shelter, to vulnerable members of Shan and Lahu communities.
3. Give access to income-generating activities
4. Advocate for the rights of Shan/Lahu refugees

**Activities:**

JRS started to assist Shan people in 1999, focusing on community-based schools for young children. Over time, the program was expanded to include medical assistance, support for orphanages, kindergarten and primary school and income generation and livelihood activities for Shan and Lahu people in Wieng Hang and Chiang Dao district including Krung Jor temporary camp for 600 Shan people who fled from attack since 2002.

**Southern Border Programme, Ranong:****Goal:**

Provide accessible education through community-based schools for Burmese migrant children, and where necessary, limited financial and material assistance to vulnerable Burmese families.

**Objective:**

1. Provide educational opportunities for Burmese children
2. Provide financial and material assistance to needy Burmese families
3. Advocate for the rights of Burmese children to education and protection

**Activities:**

JRS started to assist migrant children through migrant education programme since 2002. Currently JRS supports 6 community-based schools, out of which two adopt the Thai curriculum, for more than 1,200 migrant children in Ranong. JRS also provides scholarships for needy Burmese students who are able to attend Thai schools, and gives limited financial assistance to vulnerable families in the Burmese community. In addition, JRS has negotiated with the Thai local Education Department to accept Burmese children into non-formal education classes for those who are unable to attend full-time schools, starting with a small group from 2009 onwards. JRS also continues to advocate for the importance of education among migrant communities to minimise the school drop-out rate and encourage parents to send their children to schools.

**Out of Camp refugee programme, Mae Sot, Tak:****Goal:**

To develop long-term and sustainable solutions for out-of-camp Burmese refugees in the Mae Sot area.

**Objective:**

1. To build the capacity of informal refugee support networks for out-of-camp Burmese refugees on accompaniment, information-counselling, self-sustainable livelihood activities while working towards their smooth integration into the local Thai community.
2. To advocate for the rights of, and better services and protection for, Burmese asylum seekers, while working to improve detention conditions in the Mae Sot Immigration and Police Detention Centres.

**Activities:**

JRS started the programme in Mae Sot in 2004 to provide an information service, financial and material assistance to Burmese asylum seekers and displaced people. In 2010, JRS aims to move away from emergency relief activities towards more sustainable community development, income generating and livelihood activities, by building the capacity of informal refugee support networks, and by working towards the smooth integration of Burmese refugees into the local community. In addition, JRS will provide accompaniment and information-counselling as refugees work to rebuild their lives in Mae Sot and emergency financial and material assistance to vulnerable refugees in times of crisis, while advocating for better services and protection for out-of-camp refugees in Thailand in the future.



234 Moo 12, Laeng Phanit Rd., Mae Sariang, Mae Hong Son 58110  
 Telephone : 053 621 559 Fax : 053 681 575 Email : [office.msr1@malteser-international.org](mailto:office.msr1@malteser-international.org)  
 7/8 Moo 13, Mae Sariang-Mae Hong Son Road, Bankad, Mae Sariang, Mae Hong Son 58110  
 Telephone : 053 683 322 Fax: 053 621 292 Email : [office.msr2@malteser-international.org](mailto:office.msr2@malteser-international.org)

## Malteser International

**Year started working in Thailand:** 1979

**Sectors of Work:** Health incl.HIV/AIDS; Water & Sanitation : Emergency Relief; Reconstruction; Income Generations; Capacity Building incl.Gender

**Work Locations:** Mae Sariang District; Sop Moei District (Mae Hong Son Province);

**Staff:**  
 International: 4  
 Thai: 35  
 Camp: 400

**Funding Source:**  
 ECHO : Refugee Health Project  
 EuropeAid : Malteser: Sob Moei Health Project  
 Malteser : Aids Orphan Projects in Mae Sariang and Mae La Noi

**Goal:** To reduce poverty and alleviate suffering by providing health and social services to the neediest

### Project Description:

Sob Moei : Malteser has been running a Primary Health Care Program(PHC) for refugees from Myanmar since 1993. Actually it is providing 36,000 persons living in two camps with : Reproductive health, HIV/AIDS, Communicable Disease Control, Immunization, Essential Drugs, Laboratory services, Medevacs to referral hospitals, Capacity Building incl.Gender, Water & Sanitation and Vector Control.

In close co-operation with Sob Moi district Malteser started a Health project for the camp surrounding villages in 2009, providing health services and awareness rising as well as improvement in knowledge, practice and behaviour in prevention of diseases.

**Mae La Noi :** Provision of scholarships for students affected by HIV/AIDS and income generation for affected families

**Mae Sariang:** Provision of scholarships for students affected by HIV/AIDS and income generation for affected families.



1696 New Petchaburi Road Bangkok 10310  
Telephone : 02 652 9274 Fax : 02 652 9263 Email : Website : [www.righttoplay.com](http://www.righttoplay.com)

**Month/Year started working with Displaced Burmese:** June 2002

**Sector (s) of Work:** SportWorks Project

**Work Locations with Displaced Burmese:**

Tham Hin, Rajburi  
Ban Don Yang, Kanchanaburi  
Nupo, Tak  
Umpium Mai, Tak  
Mae La, Tak

**Total number of Staff:**

International Staffs 4  
National Staffs 9

**Budget:** US\$ 240,000 per year

**Funding Sources:** United Nations High Commissioner for Refugees (UNHCR),  
American Refugee Committee International (ARC)

**Mission Statement:** To improve the lives of children in the most disadvantaged areas of the world by using the power of sport and play for development, health and peace.

**Goal:**

1. Increased individual and community capacity of youth and adults through training of trainers, teachers and coaches through implementation of a sustainable sports support structure for regular sport and play activities in Tham Hin by March 2006, Ban Don Yang by December 2006, and Nu Po and Umpiem Mai by March 2008.
2. Enhanced healthy development of children and youth through regular sport and play programs in Tham Hin by March 2006, Ban Don Yang by December 2006, and Nu Po and Umpiem Mai by March 2008.

**Objectives:**

- Provision of regular and inclusive sport and play activities as tools to enhance healthy child development, build individual capacity, to strengthen community partnerships and networks and to promote peace.
- Holistic Child Development: Promotion of healthy development of children that is essential to the future of healthy communities and the re-building of civil society, on a local and global level.
- Individual and Community Capacity Building: Promotion of healthy development of communities through a coaching-based approach that increases dynamic local leadership, encourages local organizational collaboration, and involves individuals in the decision-making process.

**Activities in Thailand:**

- Development of two programs: Physical Education (PE), focusing on games and activities, is implemented in the schools; and, Specialized Training (ST) focusing on basketball, football and volleyball practice sessions and games, is implemented in the community
- Training of more than 150 youth and adults as Master Trainers, Trainers, PE Teachers and ST Coaches
- Participation of approximately 3,500 children and youth in weekly PE and ST activities



**RUAMMIT FOUNDATION FOR YOUTH AND CHILDREN – DRUG & ALCOHOL RECOVERY & EDUCATION (DARE NETWORK)**

P.O Box 47, Mae Sariang, Mae Hong Son 58110  
Tel : 053 621 090 Fax : 053 621 076 Email : [drugfree@darenetwork.com](mailto:drugfree@darenetwork.com)

**Year Started Working with Displaced Burmese** : 2000

**Sector(s) of Work** : Community-based Addiction Services

**Work Locations with Displaced Burmese:**

Mae Hong Son Province  
Mae La Oon, Mae Ra Ma Luang;  
Tak Province:  
Mae Sot, Maela, Umpium Mai , Nupoe

**Total number of staff** : International (1)  
National (7)  
Camp-Based (65)

**Funding Sources** : Refugees International Japan, Primate’s World Relief and Development Fund, APHEDA, Friends of DARE, Global Giving, TOCI, Private Donations

Ruammit Foundation for Youth and Children DARE Network, a grassroots local organization, is community based, built by its own communities to serve the addiction needs of the people. Ruammit DARE is in a unique position to meet these needs as it is the only organization providing comprehensive addiction services to the displaced people of Burma on the Thai/Burma border. Although supported by International Donors, Ruammit DARE is operated by local people.

Our priorities to strengthen communities, change attitudes and beliefs through education and to create a cohesive and wide-spread, accessible challenge to addiction throughout the displaced communities from Burma represents a way in which these diverse groups can work together to build healthy communities in mind, body and spirit.



11/7-8 Soi Donchai, Prasartvitee Road, Mae Sot, Tak 63110.  
Telephone: 055 536 345, Fax: 055 536 354, Email: [maesot.cdm@solidarites-thailand.org](mailto:maesot.cdm@solidarites-thailand.org)

**Year Started Working with Displaced Burmese:** 2007

**Sector(s) of Work:** Water, Sanitation, Food Security and Environment

**Work Locations with Displaced Burmese:** Mae La camp and surroundings, Tak Province

**Total number of staff:** 4 international, 30 national and 200 camp-based

**Funding Sources:** The European Union (EuropeAid) and BPRM

**Mission Statement:**

SOLIDARITES INTERNATIONAL is a humanitarian organisation which provides aid and assistance to victims of war or natural disaster. For 30 years the association has concentrated its action on meeting three vital needs – water & sanitation, food and shelter - by carrying out emergency programmes followed by reconstruction projects in various countries.

Whilst fully respecting the assisted populations' customs and culture, SOLIDARITES INTERNATIONAL programmes are implemented through the joint expertise of over one hundred forty expatriate volunteers and more than one thousand five hundred local managerial staff and employees.

**Goal:**

Improvement of live and health conditions of people in need

In Thailand SOLIDARITES INTERNATIONAL aims at contributing to the improvement of the living conditions of the Burmese Refugees in the camps and the host communities.

**Objectives:**

Improvement of access to water and sanitation, food and shelter

In Thailand SOLIDARITES INTERNATIONAL aims at improving the water distribution and the sanitary conditions in Mae La camp and the food production and the environment in and around the Mae La camp.

**Activities:**

- 1) Water and Sanitation
- 2) Food Security
- 3) Shelter rehabilitation and construction

In Thailand, SOLIDARITES INTERNATIONAL is involved in water, sanitation, food production and environment through several activities:

- a) Vector control, latrines construction, drainage construction and hygiene promotion;
- b) Development and maintenance of water points and network, water quality treatment and water quality monitoring on water distributed for drinking;
- c) Fish farming and irrigation development and farming production trainings;
- d) Planting trees and rivershed protection.

**Shanti Volunteer Association (SVA)**

Maesot Office  
 810/3 Intarakhree Rd.,  
 Maesot, Tak 631 10  
 Tel 055 536594-5, Fax 055 536596  
 E-mail: svamst@cscsoms.com

**Shanti Volunteer Association (SVA)**

**Started Working with Displaced Burmese** September 2000

**Sector(s) of Work** Education

**Work Locations:** 7 refugee camps and along Thai Burma border communities

**Total number of Staff:** International: 1 - National: 20

**Funding Sources:** UNHCR, Postal Savings for International Voluntary Aids, Private Donors

**Mission Statement:** To develop children's values, attitudes and knowledge based on their rights to education and cultural inheritance, primarily targeting "children under difficult condition" through "reading (habit) promotion programs".

**Goal:** To improve life skills (knowledge, skills, and attitudes) of children in the refugee camps

**Objectives:** Library activities are well-established by the refugees in the camps. (The activities include traditional and cultural activities)

**Activities****Library related events and activities organized by CBOs**

- Provide training programs on library activity management
- Provide training programs on library implementation
- Provide necessary budget and materials for daily activities and annual events
- Organize meetings for monitoring and evaluation

**Cultural and traditional activities organized by CBOs**

- Organize Refugee Children Cultural Festivals : RCCFs
- Support preparation process for traditional cultural performance
- Provide traditional musical instruments and costumes to Cultural Committees
- Organize preparation meetings for Parent Associations, schools, Community based organizations

**Library buildings maintained by CBOs**

- Re-construction and repair on existing library buildings
- Provide training programs on participatory library construction and renovation to Community based organizations

**Library committees included in the structure of KRCEE**

- Provide a training session on Community and Library Service for Community based organizations

**Manuals and supplemental educational materials introduced in camps**

- Provide necessary equipments to Karen Youth Organization(KYO) and Toshokan Youth Volunteer (TYV)
- Utilize integrated manuals on library management and related activities
- Provide training session on Developing/utilizing Supplemental Education Materials

**Karen and Burmese picture books increased**

- Organize publication meetings
- Provide training program on book publication and distribution
- Publish hard-covered picture books, soft-covered picture books, and folktale books in Karen and Burmese
- Distribute the books to each library and related activity sites

**Reading promotion in Thai village nursery and primary schools**

- Coordinated training programs on reading promotion in Thai villages

(Tha Son Yang District, Tak province).

Thailand Burma Border Consortium  
 ไทยเบรมา บอร์เดอร์ คอนซอร์เทียม  
 12/5 Convent Road, Silom, Bangrak, Bangkok 10500  
 12/5 ถนนคอนเวนต์ แขวงสีลม เขตบางรัก กรุงเทพฯ 10500  
 Tel. 02-238-5027-8 Fax. 02-266-5376  
 โทร. 02-238-5027-8 โทรสาร. 02-266-5376  
 E-mail: tbbcbkk@tbbc.org www.tbbc.org



## Thailand Burma Border Consortium, TBBC

**Started Working with Displaced Burmese** : March 1984

**Sector(s) of Work** : Food, Nutrition, Food Security, Livelihoods, Shelter, Non-Food Items, Camp Management, Displacement Research

### Work Locations :

Mae Hong Son Province; Site 1 & 2, Mae La Oon, Mae Ra Ma Luang  
 Tak Province; MaeLa, Umpiem Mai, NuPo  
 Kanchanaburi Province; Ban Don Yang  
 Ratchaburi Province; Tham Hin

### Staff:

20 International, 62 National. TBBC does not directly employ refugees but supports around 3,000 workers through refugee committees.

### Funding Sources:

About 40 Donors. Over 90% of funding is from the Governments of Australia, Canada, Czech Republic, Denmark, Great Britain, Ireland, New Zealand, Norway, Poland, Spain, Sweden, Switzerland, The Netherlands, Taiwan and USA, plus the European Union (ECHO).

### Mission Statement:

The Thailand Burma Border Consortium, a non-profit, non-governmental humanitarian relief and development agency, is an alliance of NGOs, working together with displaced people of Burma, to respond to humanitarian needs, strengthen self-reliance and promote appropriate and lasting solutions in pursuit of their dignity, justice and peace.

**Long-term Vision:** TBBC envisions peace and justice in Burma where people live with dignity, enjoying freedom from persecution or harm and are able to assert their rights. There is respect for diversity and people work together to develop their communities and country.

**Medium-term Goal:** To support displaced people of Burma to be self-reliant in a just society where there is full respect for human rights.

**Short-term Aim:** To ensure an adequate standard of living and respect for the human rights of displaced people of Burma, by working in partnership with displaced communities, building capacity, strengthening self-reliance and food security.

### TBBC complies with the:

- The Code of Conduct for the International Red Cross and Red Crescent Movement and non-governmental organisations in Disaster Relief (1994)
- The 2008 CCSDPT Inter-Agency Code of Conduct which incorporates Core Principles developed by the Interagency Standing Committee Task Force on Protection from Sexual Exploitation and Abuse in humanitarian Crises (2002)
- And is guided by the Humanitarian Charter and Minimum Standards in Disaster Relief (SPHERE -) project.

### Strategic Plan Objectives 2009-2013

- Pursue change leading to durable solutions while ensuring a protective environment for displaced people of Burma
- Increase self-reliance and reduce aid dependency by promoting and supporting livelihood opportunities
- Ensure continued access to adequate and appropriate food, shelter and non-food items prioritising support for the most vulnerable.
- Support mutually accountable community-based management which ensures equity, diversity and gender balance
- Develop TBBC organizational structure and resources to anticipate and respond to changes, challenges and opportunities

### Activities:

- Provision of basic food basket: rice, split peas, cooking oil, salt, fish paste, fortified flour
- Support of Supplementary Feeding Programmes and Nursery School lunches
- Nutrition education, monitoring and research
- Support of Food Security initiatives: CAN project – training, demonstration sites, seed distribution
- Provision of shelter materials and cooking fuel, researching opportunities for efficiencies and livelihood opportunities.
- Entrepreneur development training and savings project, support of weaving for income generation
- Support and capacity building of camp management
- Participation in CCSDPT/ UNHCR Protection and Camp Management Working Groups
- Displacement documentation

The Thailand Burma Border Consortium is a Company Limited by Guarantee in England and Wales. Company number 05255598, Registered Office 35 Lower Marsh, London SE1 7RL. Charity Commission registered number 1109476

MEMBERS : Caritas, Switzerland • Christian Aid, UK • Church World Service, USA • DanChurchAid, Denmark • Diakonia, Sweden • ICCO, Netherlands • International Rescue Committee, USA • NCCA Christian World Service, Australia • Norwegian Church Aid • ZOA Refugee Care Netherlands



## Taipei Overseas Peace Service

**Date Started Working with Displaced Burmese:** JAN 1997

**Sector of Work:** Education and Child Care

**Work location:** Tak Province

Mailing Add. : P.O. Box 66, Mae Sot, Tak 63110  
Tel/Fax : 055 542 068 Email : [topsthailand@gmail.com](mailto:topsthailand@gmail.com)

Taipei Overseas Peace Service (TOPS), a Taiwan-based non-governmental organization (NGO) that previously operated under the name of the Thai-Chinese Refugee Service (TCRS). Since 1980, TCRS had provided emergency relief and development assistance for Indo-Chinese refugees located in northern and eastern Thailand. In 1994, the organization was reformed as TOPS.

From the outset, TOPS-Thailand has been providing educational assistance programs to Karen refugee camps, Burmese migrants and implementing community development projects to remote Thai-Karen villages along the Thai-Burmese border in Tak Province, Thailand. At the same time, TOPS-Cambodia used to carry out non-formal education programs in adult illiteracy and for school dropouts in Siem-Reap Province, Cambodia, afterwards had handed it over to local educational NGO.

TOPS recognizes that full community participation is a fundamental aspect of development work, and seeks to involve every stakeholders at all stages of its work - from assessing needs and project planning to implementation and supervision.

### 1. Mission

To provide humanitarian assistance, mainly early childhood education and care, for displaced Burmese and local people affected by the influx of displaced populations.

### 2. Goal

Displaced Burmese children and conflict-impacted ethnic children along the Thai-Burma border have an improved quality of child care environment and to meet their overall development needs. Also support the people in affected Thai-villages.

### 3. Objectives

- To ensure that Displaced Burmese children and conflict-impacted ethnic children grow up in a safe and learning-friendly environment.
- To establish a comprehensive early childhood development system responds to universal and local contexts and realities.
- To promote the sustainability of community development by enabling the local partners to manage and coordinate the program by itself.

### 4. Activities

Early Childhood Development (ECD) Programme

- Location: Three Shelters, Tak Province
- Activity and Service: In order to promote the project's sustainability, the activities have been carried out in coordination with, and through, the community committees and local partners. The activities include capacity building, nursery teacher training, parents meeting, nutrition feeding, material supplies and curriculum development and so on.

TOPS has cooperated with the women groups and refugee committees to implement Early Childhood Education and Nutrition Programs in Mae La (since 1997), Nu Po and Umpiem Mai (since 2000) refugee camps. TOPS provides a range of services to the nursery schools – all implemented through local staff – such as teacher trainings and networking, local curriculum development, school supplies, nutritious lunches for the children on school days, and subsidies to the nursery school staff, camp-based trainers and supervisor, etc.

In the 2010 school year, TOPS assisted around 4200 children and 220 caregivers in 41 nursery schools throughout the three refugee camps in Tak province with these services.

### Social Service for EVIs programme

- Location: Three Shelters, Tak Province
- Activity and Service: TOPS has worked closely with the women groups in Mae La and Nu Poh refugee camps in Tak province in order to develop and plan small self-sustainable projects to assist Extremely Vulnerable Individuals (single parents, isolated women, orphans, elderly).

This project acts as a temporary shelter for victims who have suffered from domestic violence and have nobody to take care of them. Include financial and advisory support, as well as delivering trainings.

### Thai Community Development (TCD) Programme

- Location: Tha Song Yang District, Mae Sot District, and Mae Ramat District in Tak Province
- Activity and Service: Education support and Community Development Programme in Affected-Thai Villages. TOPS support the Thai primary schools, higher education scholarship, and wider-related community development projects (ex. Computer training, Renewable energy, etc.) in border area by working closely with villages, Thai authority, and other related agencies.

Primary Education Project, since 1998, TOPS has provided supplies to 10 primary schools in coordination with the local education authority and fully supports village schools by working closely with the communities in Tha Song Yang District, Tak Province. In the 2008 school year, there are 500 students who benefited from TOPS' involvement in branch schools.

High Education Scholarship Project, TOPS has offered free accommodation, scholarship, living cost, and study assistance for Karen youths who are eager to study in university and college. In addition, we contribute other resources which are necessary to train the youths such as computer training and textbooks on English conversation and community rights, etc. in order to develop their potential in ways that are useful for their daily lives.

Community Development Project, in order to improve the living standards of the villages within this district, TOPS has conducted a social survey in order to understand the villagers' needs and, based on this, has promoted supportive community development projects in these villages. For example: weaving, health checking, agriculture training, and micro-hydropower plant.



P.O Box 58, Chiang Mai University, Chiang Mai 50202  
Tel/Fax : 053 221654, 053 357 695 Email : [weave@weave-women.org](mailto:weave@weave-women.org)

## WOMEN'S EDUCATION FOR ADVANCEMENT & EMPOWERMENT WEAVE

Year Started Working with Displaced Burmese : 1990

Sector(s) of Work : Women and Children's Education, Economic Self Reliance

Work Locations with Displaced Burmese:

**Mae Hong Son Province:**

S1-Ban Kwai/Ban Tractor,  
S2-Ban Mae Surin,  
K1-Mae Ra Ma Luang;

**Tak Province:**

Mae Sot, Maela, Umpium Mai

**Ratchaburi Province:**

Tham Hin

**Kanchanaburi Province:**

Ban Don Yang

Total number of staff : International (4)  
National (13)

Funding Sources: Bernard van Leer Foundation-the Netherlands, Terre des Hommes-Germany in Southeast Asia, Global Fund for Women Children, Refugee International Japan, Private donors.

WEAVE was founded in 1990 to help women achieve greater power, rights and opportunities in their communities. To implement these goals, we work directly with women's organizations within ethnic minority communities (in refugee camps, migrant and IDP communities). We firmly believe that encouraging the leadership of women and the development of their status benefits the entire community. We assist these organizations to become empowered, self-reliant, and to fully participate in their communities' social and political lives. Our programs focus on Child Development and Women's Capacity Development.



## World Education

[Previously Consortium and World Education / Consortium]

<b>WORK SECTOR</b>	Education -- Refugees and Border Communities
<b>Started Refugee Work in Thailand</b>	1980
<b>With Displaced from Burma</b>	1999
<b>WORK LOCATION</b>	7 refugee camps and border communities
<b>NUMBER OF STAFF</b>	International - Hire – 5; Local - Hire – 38
<b>FUNDING SOURCES</b>	US Government (USAID), UNICEF and Private Donors

### MISSION STATEMENT

World Education is committed to responding to the needs of refugees in camps and those in border communities with realistic, well-planned, effective services and activities that increase their potential, instill confidence and develop the capacity to define and manage their own educational and social systems.

World Education supports collaboration, service and finding opportunities to increase skills and knowledge. Services and activities are implemented with respect for the cultures of those we work with and the dignity of individuals.

### PROJECT ACTIVITIES

- **Teacher Training** Train and follow-up with new teachers from 7 of the refugee camps. Support for the KRCEE's Teacher Certificate Program (TCP).
- **Management Training** Train refugee school directors and deputy school directors, when requested.
- **Special Education** Through the Karen Women's Organization, provide technical support and training for special education programs in 7 refugee camps for people who are deaf, blind or have learning difficulties, when requested.
- **Adult Literacy** Through the Karen Women's Organization, provide support and training for adult literacy in 7 refugee camps.
- **English Immersion Program (EIP)** Provide gifted students with skills and training to serve refugees and community-based organizations.
- **Curriculum Development** Prior development of curricula in science, English, health and social studies. Assist with curricula in border communities, as needed.
- **COPE (Creating Opportunities for Psychosocial Enhancement)**
  - Teacher Training:** Train teachers to be aware of psychosocial issues, implement classroom management that follow psychosocial principles and make instructional decisions that maximize student participation, interaction and self expression;
  - Curriculum Development:** Address psychosocial issues through integration into the Teacher Certificate Course and KRCEE curricula;
  - Education Materials:** Assist with provision and development of appropriate education materials.
- **Higher Education** Support for the Institute of Higher Education and other higher education initiatives.
- **Global Border Studies (GBS)** Provide gifted students with knowledge and skills to help move their communities beyond conflict to peace and prosperity
- **Border Communities** Teacher training and other education support in border communities and schools.

World Education partners with community-based organizations, and coordinates with the Royal Thai Government (Ministry of Interior, Ministry of Education), the UNHCR, and with other non-governmental organizations through CCSDPT.



<b>Name of Organisation</b>	:	ZOA Refugee Care - Thailand
<b>Started Working with Displaced Burmese</b>	:	1984
<b>Started Country Office in Mae Sot</b>	:	1997

ZOA mission: ZOA Refugee Care supports people who suffer because of armed conflict or natural disaster, in rebuilding their livelihoods. We call on our constituency and partners, in the North and in the South, to take responsibility and get involved. We provide maximum added value to those we support and those who support us.

**Work Locations:** 9 camps along the border (Majority of activities are in 7 camps from Mae Sariang to Suan Pheung)

**Staff:** 2 Expatriates hired, 1 locally hired expatriate and 56 staff members with local contracts

**Funding Sources (2010):** BWAA, EC, Japanese Embassy, MOFA – the Netherlands, PRISMA, PSO, UNHCR, UNICEF, World Education and ZOA in the Netherlands

**Total Budget (2010):** Between EUR 4,500,000

**Result Sectors:**

**Provision of Food and Shelter**

Channel for funding granted by the Dutch Ministry of Foreign Affairs to TBBC; provided adequate and appropriate food, shelter, cooking fuel and non food item for displaced persons in refugee camps

**Support to Basic Education**

Increased implementation by CBOs & community; implementation of effective & relevant curriculum; improved access to and use of education facilities & resources; improved knowledge & skills of educators as well as partnerships support improved quality and managed phase-over process

**Support to Non Formal Education**

Provided basic & pre-intermediate functional & conversational English language skills; job-related English language training; numerical literacy computer training; targeted skills training for refugees leaving for resettlement in the US as well as managed phase-over process

**Support to Higher Education**

Partnerships with course providers to support the development of a GED course & an online course; students gained skills to enable them to progress to higher levels and managed phase-over process

**Support to Vocational Training**

Increased implementation by CBOs and community; partnership with Thai vocational colleges; skill retention sessions; improved trainer skills, training facilities and relevant, certified curriculum and managed phase-over process

**Support to Livelihoods Programme**

Livelihoods agriculture project; Thai participants on livelihood; workplace based skills of literacy, numerical & book-keeping skills; partnerships with Thai institutions and other NGOs; link to potential markets and initiated cooperative

**Capacity Enhancement for Partner and Camp Community**

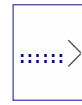
Engaged new local NGO, and CBO staff to take over responsibilities; training needs assessed; training materials; reassess the community structures and HR needs; capacity building training for staff and CBOs staff and PTA training

**Mainstreaming Important issues in the Programme**

**Gender:** Equal division of responsibilities amongst male and female educators, parents and guardians and equal opportunities to access to all forms of education by male and female camp residents

**Peace Building:** A refugee community that is supportive of each other regardless of ethnicity, political persuasion or religious background, capable of negotiating with relevant authorities for change

# Sub Committees / Working Groups ToR



## CCSDPT EDUCATION SUB-COMMITTEE

### 1. Background

The Education Sub-Committee of CCSDPT is charged with encouraging coordination and the flow of information between CCSDPT member organizations, partners and stakeholders.

### 2. The Sub-committee

The sub-committee mainly deals with issues related to education in the camps though issues relating to migrants and IDPs are also discussed. The sub-committee is composed of representatives from CCSDPT organizations with educational programs or activities. These include: ADRA Thailand, Jesuit Refugee Service (JRS), Right to Play (RTP), Shanti Volunteer Association (SVA), Taipei Overseas Peace Service (TOPS), Women's Education for Advancement and Empowerment (WEAVE), World Education (WE) and ZOA Refugee Care. Other organizations in CCSDPT occasionally participate in meetings based on interest or relevant issues. These include: AMI, COERR, DARE, HI, IRC and NCA. In addition, meetings are attended by partners, other organizations and individuals providing educational support as well as those with interest in refugee and/or migrant education.

### 3. Terms of Reference

The Education Sub-committee is responsible for the following tasks:

- Fostering the exchange of information within the committee, and with other partners and stakeholders, in order to promote best practice and coordination through periodic organizational updates.
- Sharing relevant documents and materials with other organizations.
- Participating in workshops, trainings and meetings, as required.
- Reviewing the applications of organizations applying to be members of CCSDPT and advising the CCSDPT Directors whether a proposal is viable, has the support of refugee educators and does not duplicate the work of other organizations.
- Contributing to and updating an education strategy as part of an overall CCSDPT strategy for work in support of refugees.
- Periodically updating and sharing sub-committee documents, such as: educational statistics, a roster of organizational responsibilities, camp stipends, teacher competencies, etc.
- Reviewing a summary of the annual proposals to be submitted to MOI by each member organization with education programs.
- Ensuring that education programs comply with international standards, such as Sphere and the INEE Minimum Standards for Education in Emergencies.
- Participating in one joint meeting a year with the Health Sub-committee.

### 4. Management

The sub-committee follows a similar format and rules that apply to the other sub-committees and working groups in CCSDPT. The sub-committee meets on a regular basis, one day before the CCSDPT meeting. Education consultation meetings may be held at various border points before CCSDPT meetings to provide an opportunity for input from the field. Organizations with programs at other sites along the border are encouraged to hold a similar consultation meeting.

The Chair and Vice-chair of the Education Sub-committee are selected by sub-committee members at the December meeting. The selection is determined by a majority of the CCSDPT organizations with education programs. When the CCSDPT directors require decisions to be made by the Education Sub-committee, input is welcomed and is often necessary from partners and stakeholders but the final decisions are made by CCSDPT member organizations.

Jan 09

## CCSDPT ENVIRONMENTAL HEALTH AND INFRASTRUCTURE SUB-COMMITTEE (EHI)

### Chair person

- Facilitate the EHI meetings ;
- represent the EHI SC members during CCSDPT meetings and meetings with other stakeholders such as donors, Thai authorities, other stakeholders informing about activities, voicing issues and concerns ;
- Share information obtained in various meetings and other ways (reports, oral feedbacks) with other members;
- Link between CCSDPT directors, other SC and EHI SC members;
- Requests support from other members for specific tasks if needed (workshop preparation, specific researches, etc...)
- Ensure that all opinions are taken into account and encourage and facilitate consensus which will achieve results.
- Make sure EHI SC strategic direction is in line with the general CCSDPT strategy
- Compilation and sending of minutes of meetings
- Receive and edit propositions for agenda from other members

### Vice Chair person

- Assist the chair person in his/her responsibilities
- Replace chair person for temporary unavailability (in no way the vice chair person will be considered as replacement of chair person if the later resigns or has to leave)

### Other members

- Attend all CCSDPT meetings and commit to provide written and oral feedbacks systematically when requested and respecting deadlines (monthly update of activities and problems met, answers to surveys, etc...)
- Share the responsibility to take the minutes of the meeting
- Commit to volunteer for specific tasks that might be asked during the year (collecting information from other members, research about technical subjects, problems, concerns, prepare workshops and presentation, etc...)
- All members remain responsible to provide their line manager(s) with specific feedback related to their own work situation and management
- Being the link between field stakeholders and EHI SC members

### Remarks

- It is requested that all directors maintain an inclusive communication approach with all staff participating to the EHI SC meeting in order to facilitate the SC functioning ;
- Country directors must acknowledge that the chair person and vice chair person are EHI SC members messengers and cannot be seen as the sole accountable person for any statement or writing shared with directors

## CCSDPT HEALTH SUB-COMMITTEE

### 1. Background

Since the beginning of the humanitarian crisis in Burma, humanitarian aid assistance and delivery of basic services to Burmese refugees in Thailand has been coordinated through CCSDPT. Until recently, it was generally assumed that repatriation of refugees living in camps along the Thai-Burma border, would take place sooner or later. Therefore, the camps were still considered temporary shelters with the provision of basic standard of living. However, due to intransigence of the ruling junta in Burma, resulting in permanent oppression of minorities and ongoing widespread abuse of human rights, repatriation of refugees is not a possibility at the present circumstance. Constant influx of new refugees and the protraction of the camps made the "temporary shelters" not only grow in size but also lead as well to development of (semi-) permanent settlements. As disasters always have significant impact on the public health and the well being of the affected population, the occurrence of health problems resulting from close living conditions, and the need to prevent epidemics demanded a harmonized approach based on "best practice" for all camps. Therefore, the Health Subcommittee of CCSDPT has been in charge of dealing with all health related issues in the camps since January 1997. This paper contains a draft ToR for the Subcommittee and is meant to provide a baseline document for discussion and approval of the CCSDPT Board of Directors.

### 2. The Committee

The committee mainly deals with technical and strategic issues, related to primary health care, control of communicable and non-communicable diseases, health training and all other health related issues including physical rehabilitation (physical therapy and Prosthetic /assistive devices) services for the persons with disabilities in the camps. It is also involved in the health planning approach on a regular basis which will be part of a general CCSDPT strategic plan. The committee is composed of responsible representatives of each NGO dealing with health management and health training in the camps. The following NGOs are members of this committee: AMI, ARC, IRC, MI, COERR, HI and TBBC. From May 2008 onwards, a new border Health Information System has been implemented with the financial contribution from the health agencies and UNHCR wherein this committee's chairman and vice-chairman have been provisioned to give technical support and supervision.

The members of the committee collect information from their respective camps and share at the committee regularly. They discuss relevant health issues at a professional level and share experiences with other health specialists such as CDC, WHO, UNHCR, UNICEF, Thai Ministry of Public Health and others. They convey decisions and information from the committee's meetings back to the camps.

### 3. Terms of Reference

The committee is in charge of the following tasks and objectives:

- Promote that all health related issues including physical rehabilitation addressed competently in all camps (→ see attached spreadsheet "who does what")
- Promote participatory processes in handling of health related matters, in view of capacity building, self-reliability and individual independence of refugees and their communities,
- Foster exchange of information within the committee, international health organizations and other stakeholders, in order to develop best practices for handling health related Issues
- Develop measures to control communicable diseases in coordination with environmental health, shelter and food security (joint meetings)
- Develop a standardized system of triage
- Develop minimum performance and quality standards, core indicators, baselines and benchmarks for health management and services
- Support the development of training curricula and modules for health workers
- Promote the continuing development of a health information and surveillance system
- Encourage members to participate in workshops, trainings, meetings, etc. to promote best practice and competent handling of health issues
- Discussion and problem solving of all health related issues
- On need, form task force or specific forum from members of the HSC for in department review of certain health issues relevant to most of the health organizations to facilitate the implementation and contribute to quality of care.
- Elaborate a health strategy to feed in to the CCSDPT general strategies on a regular basis

### 4. Administration

The administration of the committee follows the same organization and rules as applied for other committees within CCSDPT. A chairman and a vice-chairman will be elected annually. The committee meets on a regular basis (monthly), before the directors and the general CCSDPT meeting. On special agreements, further meetings, workshops, etc. for the committee members and/or further participants can be organized.

Feb 2011